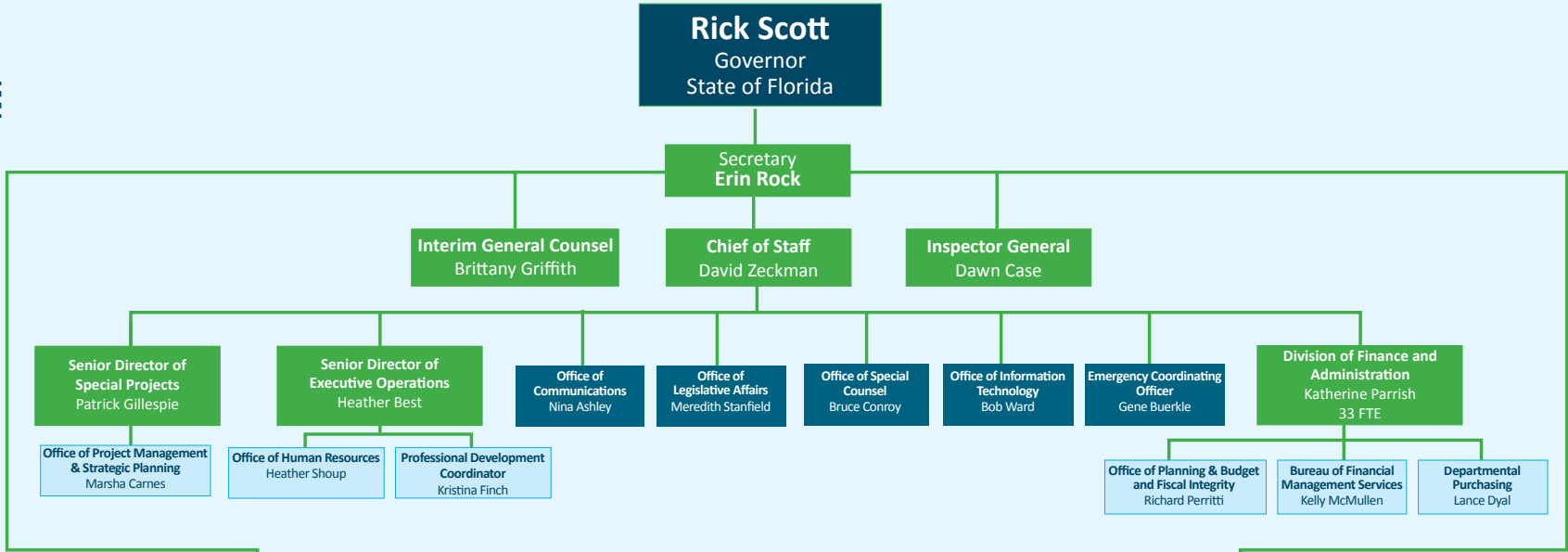
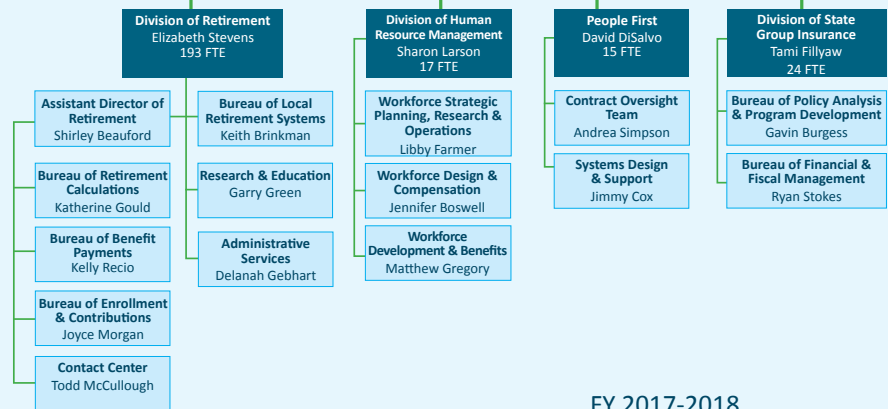


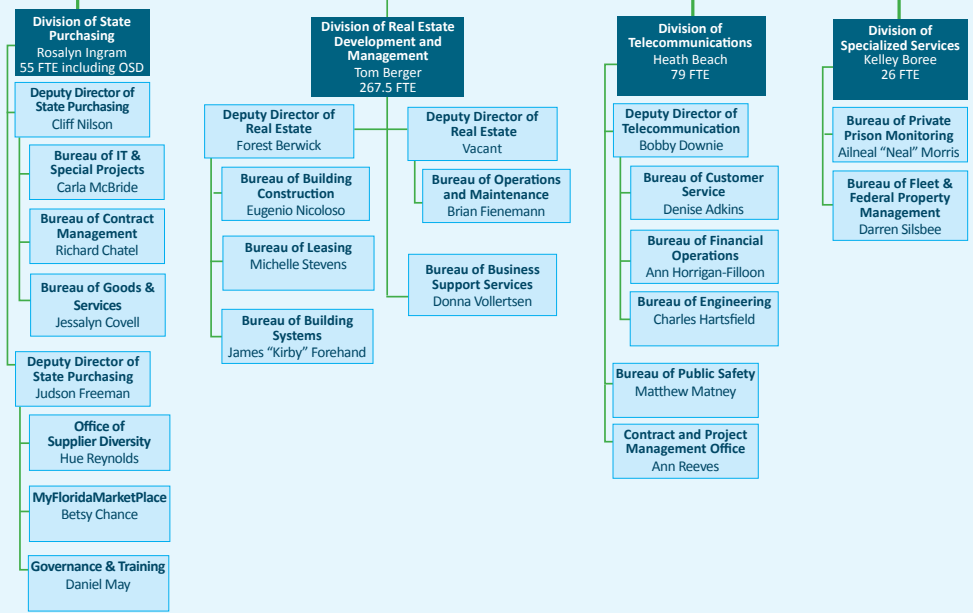
- Independent Entities**
- Public Employee's Relations Commission
 - Florida Commission on Human Relations
 - State Employee Leasing (Enterprise Florida, Inc)
 - Division of Administrative Hearings
 - Agency for State Technology



Workforce Operations



Business Operations



FY 2017-2018
 Department of Management Services
 Agency Organizational Chart
 756.5 FTE (DMS Proper Only)